



**Hillsborough County
Public Works Department (HCPWD)
Sidewalk Program**

Hillsborough
County

**John Newton, Director
Transportation Maintenance
Division, Hillsborough County
Public Works Department
June 25, 2008**



Purpose

To Provide Information on HCPWD Sidewalk Programs with Emphasis on Repair and Replacement

What are the Programs?



- **ADA Retrofit**
 - ✓ Performed by Annual Contract
- **“GAP” Program**
 - ✓ Program to Connect Sidewalk Projects from One Development to Another
- **New Construction**
 - ✓ Primarily Developer-Installed
- **Repair**
 - ✓ Temporary Asphalt (painted)
 - ✓ Grinding
 - ✓ Precision Cut (Contract) to be Implemented Soon
 - ✓ Flexible Pavement / Concrete Patch
- **Replacement**
 - ✓ In-House Crews
 - ✓ Annual Contract
 - ✓ Multiple Small Business Contracts
- **Sidewalk Condition Coding**
- **PWD Yearly Total Costs = \$2.4 M**

Issues at Hand:



- **Large Inventory: 2,400 Miles...Many Considerations**
 - ADA Retrofit
 - GAP Program
 - PWD Construction per Year
 - County Developer Projects
- **Deficiencies Identified: 35 Miles as of May 2008.**
 - 12,443 Repair Locations - Grind or Precision Cut (23.5 Miles)
 - 5,965 Replacement Locations - Concrete (11.2 Miles)
 - Funding Limited to Replace Approximately 4-5 Miles per Year
- **Developing a Systematic Approach to Determine Defects**
- **Providing Reliable Scheduling of Replacement**

Sidewalk Inspection Program:



- Includes 4-ft and 5-ft Wide Sidewalk Sections
- Conducted by Maintenance Unit's Asset Coordinators
- Developing Asset Condition Code Criteria to Inspect **33%** of Inventory Annually



1. Initial inspection: leads to treatment.
2. Structural condition: leads to grinding, asphalt repair or replacement.

SIDEWALK ASSET CONDITION CODING					
STRUCTURAL CONDITION		FUNCTIONAL CONDITION		PRIORITY CONDITION	
CODE	DESCRIPTION	CODE	DESCRIPTION	CODE	DESCRIPTION
5	NEW: NO HORIZONTAL OR VERTICAL SETTLEMENT OR SEPARATION	5	NEW: NO HORIZONTAL OR VERTICAL SEPARATION	5	NEW: NO MAINTENANCE REQUIRED
4	NOT NEW: NO HORIZONTAL OR VERTICAL SETTLEMENT OR SEPARATION	4	NOT NEW: NO HORIZONTAL OR VERTICAL SEPARATION	4	NOT NEW: PERFORMING AS INTENDED
3	GRIND MINOR HORIZONTAL CRACKING < 3/4 INCH	3	MINOR VERTICAL GAPS 1 INCH	3	SCHEDULED REPAIR NOT REQUIRED: PEDESTRIAN TRAFFIC LOW
	MINOR VERTICAL SEPARATION < 3/4 INCH		MINOR SPALLING 1 FOOT		
2	REPAIR WITH ASPHALT = REPLACE	2	1 INCH < GAPS IN SIDEWALK < 2 INCHES	2	SCHEDULE REPAIR: PEDESTRIAN TRAFFIC MEDIUM
	3/4 INCH =< MAJOR HORIZ CRACKING OR 2 INCHES		1 FOOT < SPALLED < 2 FEET		
1	REPLACE	1	REPLACE	1	IMMEDIATE REPAIR:
	2 INCHES =< MAJOR HORIZONTAL CRACKING		2 INCHES < MAJOR DANGEROUS GAPS		ARTERIALS / COLLECTORS
	2 INCHES =< MAJOR VERTICAL SEPARATION		2 FEET < MAJOR SPALLING		LOCATION :
	COMPLETE FAILURE OF STRUCTURAL CONDITION		SIDEWALK COLLAPSING		SCHOOL / DAYCARE, ASSISTED LIVING FACILITIES / NURSING, HOSPITALS
	GAP OR GAPS EXIST. SIDEWALK MISSING		SIDEWALK IMPASSABLE: DETOUR REQUIRED		

ADA Program



- Program Managed by HCPWD Engineering Division
- 65-70 % of Current Inventory Needs to be Retrofitted to Meet ADA Compliance
- Approximately 500 Ramps Retrofitted Annually



The “GAP” Program



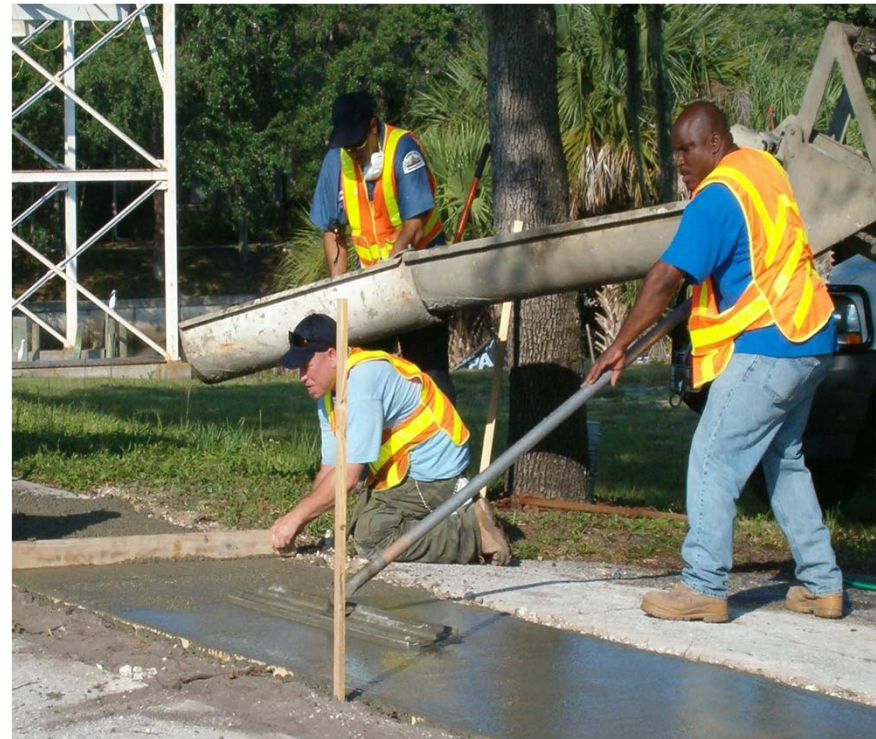
- Program Managed by HCPWD Engineering Division
- Construct New Sidewalk in Existing Neighborhoods Where “Gaps” are Found Between Previous Sidewalk Construction Projects
- Identified Gaps = 2 1/4 Miles
- 3/4 Miles Completed Annually



New Construction



- Program Managed by HCPWD Engineering Division
- Where No Sidewalk Exists in Older, Established Neighborhoods
- Grant Dollars Used Approximately \$400,000 Annually
- Approximately 3.5 Miles Constructed Annually



Developer Projects



- New Neighborhoods
(On and Off Site Locations)



- Approximately 15 Miles Added to
County Inventory Each Year

Repair Program



- Grind
- Precision Cut (Contract)
- Asphalt
- Flexible Pavement
- Concrete Patch



- 35 Miles Determined to be Defective

Replacement Program



- Concrete Replacement
 - ✓ Contract
 - ✓ Maintenance Units
 - ✓ Culpable Parties, i.e. Utilities
- 35 Miles Determined to be Defective
- Funding Limited to Replace 4-5 Miles per Year



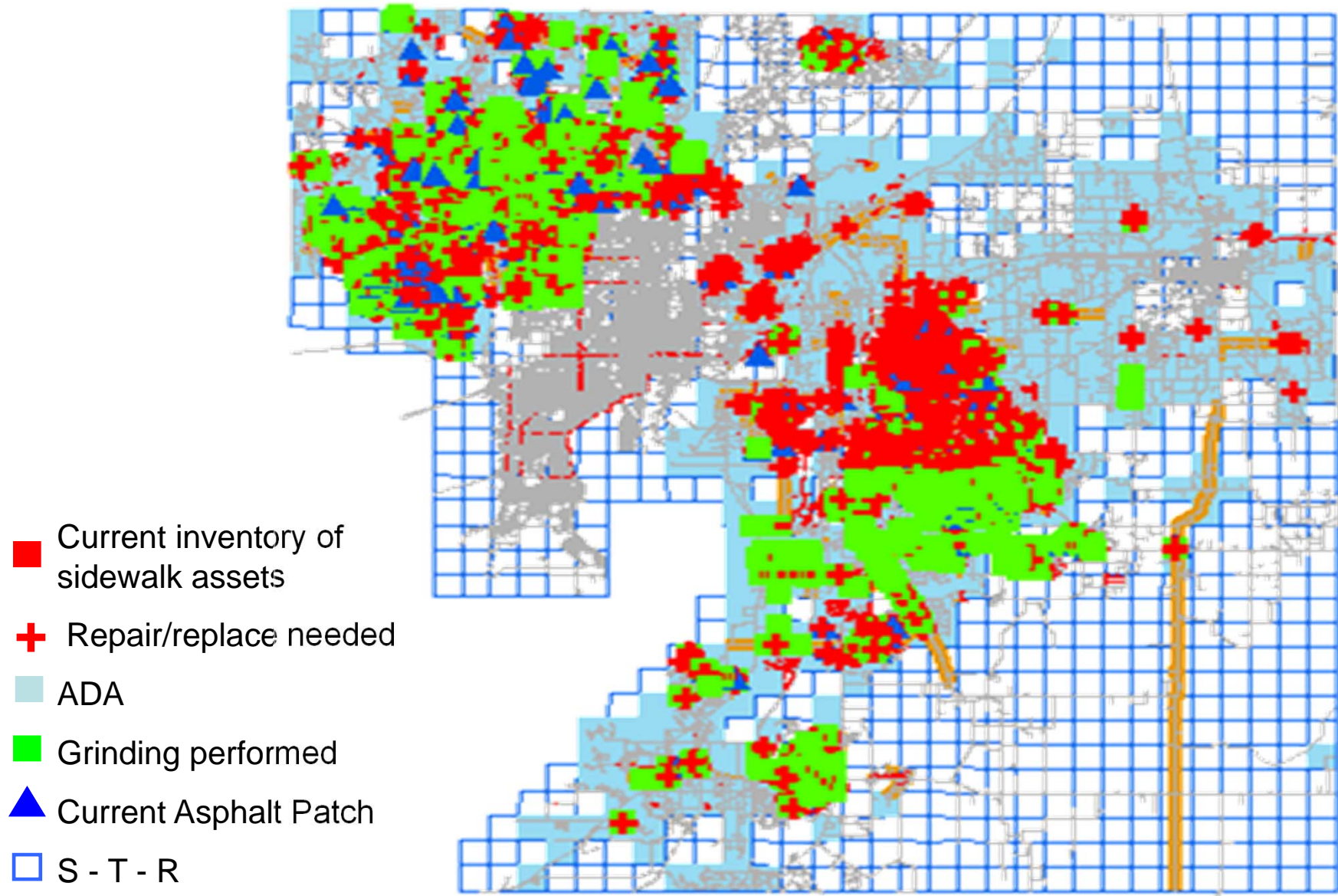
Getting Our “Arms” Around the Issue...



- Complete Condition Code Criteria for Inspections
- Conduct 33% Inventory of Defective Sidewalk Each Year
- Develop and Update GIS Layers of Various Requirements
 - ✓ ADA
 - ✓ Defective
 - ✓ GAP
 - ✓ Other
 - ✓ New
- Develop Replace/Repair Strategy
 - ✓ Contracts
 - ✓ Maintenance Units
 - ✓ Citizen initiatives
- 4-Year Program to Replace all Deferred Maintenance and Reach Steady State of 5 Miles of New Defects Each Year



Public Works GIS Coordination



Summary



- Hillsborough County has a large inventory
- Knowing the requirements is Key
- Scheduling and providing time frames for replacement is paramount to citizens



Questions & Comments?

Feel free to contact me if you would like a copy of this briefing additional information or wish to do discuss this program further:

John Newton, Director
Hillsborough County
Public Works Department
601 E Kennedy Blvd.
22nd Floor
PO Box 1110
Tampa, Fl. 33601-1110
Office: (813) 307-1854
Fax: (813) 272-7059
newtonj@hillsboroughcounty.org



Thank you!