

FACERS News

SUMMER EDITION

2015

INSIDE THIS ISSUE:

Thank You Letter
from NACE
to FACERS 3

FACERS 2015/16
Officers & BOD 4

FACERS Fall Mtg 5

NACE/FACERS -
APWA FL 2015
Photos/Recap 6

Project Spotlight
#1—Flagler
County 12

Project Spotlight
#2—Lake County 14

FACERS Annual
Meeting Photos
& Recap 16

Sponsorship
Information Nov
Meeting 22

Membership 23

FACERS News
Editor-in-Chief—
Amy Blaida

Amy.blaida@rsandh.com

RS&H



President's Message



*FACERS President 2015/2016
Jim Harriott, Deputy County
Manager for Public Works and
Growth Management, Alachua
County*

We have reached mid-summer in Florida again, which means that it is time for several things: hot, humid weather, local government budget preparation, a change in FACERS officers, and hot, humid weather.

The new FACERS officers were sworn in at the June meeting in a very hot, humid Ponte Vedra. Faith Alkhatib will be serving as Treasurer, Joseph Kunkel will be serving as Secretary, and Doug Gable will serve as Vice President. After a long, hard fought election, I am honored to serve as your president. (Overheard at the Board meeting... “why are we filling out ballots when there’s only one name?”).

I have been tied up in long budget meetings all summer, as I am sure you also have. This budget season comes with the usual challenges. If your position is like mine, you are discussing with your elected body community priorities and how we as managers of infrastructure fit into those priorities. Everyone seems to know that our nation’s infrastructure is reaching state of critical disrepair. Why is the discussion so difficult?

We will likely always be at the losing end of the priority argument and there’s a simple reason: there are not a lot of ribbon cuttings held for resurfacing projects, the press doesn’t show up to do a front page story on the replacement of lift station pumps, and nobody even knows what CIPP lining is, why it’s being done, or even how to spell it.

But that is the job we face and the challenges are what make that job fun and interesting. The challenge of finding alternatives, new solutions is what keep days interesting. That challenge is likely why we aspired to be engineers. If adding to that challenge is a budget constraint, then so be it. We should continue to do our best to educate the public and policy makers, convey what we know in a simple understandable way and then find the best answers with the resources we available.

We as engineers, tend to find the solutions that others can’t or believe don’t exist. It is a little bit innovation, a little unconventional application, and a little making-do with what we have. It is what we do and we should be proud of it. Look to the joy in the opportunity to do what we want. Don’t let the funding part get you down.

President's Message

(Continued from page 1)

FACERS is a chance to share that pride and learn about what others are doing and problems they are facing. The meetings give us a chance to share ideas and solutions through project presentations from your peers. Ideas and problems are shared in open round table discussions. It is a chance to build a support network that will help us face the challenges of the future.



Well...that's one way to do it!

I hope you attend if you haven't before or continue attending. If you have never attended, please accept this as a formal invite. If you have attended a FACERS meeting, we look forward to seeing you at the next meeting. Please keep an eye open for our **Fall Meeting, November 18-20, 2015, at Omni Amelia Island Plantation - Nassau County.**

FACERS MISSION

The Florida Association of County Engineers and Road Superintendents (FACERS) is entrusted by professional obligation to monitor and offer opinions on related local, state and national legislation affecting transportation and public works; to contribute to the development or revision of statewide standard specifications and guideline documents; and to provide a forum for the exchange of ideas, technical information and best practices to assure every community of the best possible engineering available.

"Infrastructure" by John Oliver

If you missed the John Oliver Infrastructure video during FACERS Annual Meeting, check it out at this link: <https://www.youtube.com/watch?v=Wpzvaqypav8>





National Association of County Engineers

THE VOICE OF COUNTY ROAD OFFICIALS

Dear FACERS,

On behalf of all NACE members, a BIG, SPECIAL thanks for hosting a truly memorable NACE 2015 in Daytona Beach!

Overall, our delegates and exhibitors rated the meeting a huge success. From planning to coordinating to implementing, we sincerely appreciate the time, effort, dedication, and hospitality you extended to our organization and conference.

We especially thank Conference Chair Todd Buckles and committee members Amy Blaida, Chris Evers, Judy Grim, and Faith Alkhatib for many, many hours of collaborating with our staff and the APWA volunteers. NACE members had not attended a beach location in a long time, and your program highlighted, for our delegates and guests, the pristine beach that you probably take for granted. I can assure you our folks from North and South Dakota, Iowa, Nebraska, Kansas to name a few, doubly appreciate your selecting a coastal location!

Your enthusiasm and passion were evident from beginning to end. Until next time we meet down in Florida!

A handwritten signature in black ink, appearing to read "Brian Roberts".

Brian Roberts, PE
Executive Director

A handwritten signature in black ink, appearing to read "Rebecca L. Page".

Rebecca Page
Director of Marketing and Membership

2015/2016 FACERS Officers and Board of Directors

President James K. Harriott, Jr. Alachua County	Vice President Doug Gable Polk County	Treasurer Faith Alkhatib Flagler County	Secretary Joe Kunkel Orange County
Past President Judy Grim Volusia County	Active Member Director Jonathan Page Nassau County	Active Member Director Mounir Bouyounes Marion County	Active Member Director Scott Herring Nassau County
Active Member Director Shane Parker Hendry County	Active Member Director Fred Schneider Lake County	Sustaining Member Director Amy Blaida RS&H	Executive Liaison John Goodknight Goodknight Consulting
NACE State Director Todd Buckles Volusia County	NACE Officer (Past President) Ramon Gavarrete Highlands County	Municipal Member Director Bob Gordon City of Temple Terrace	

Pictured below: **FACERS 2015/16 Officers** from L to R: Faith Alkhatib, Doug Gable, Jim Harriott and Joe Kunkel.





FACERS CEU Information

As always, CEUs are offered at no charge to all who attend FACERS Annual Meeting (June) and Fall Meeting (Nov). To clarify how Florida is handling the reporting of CEUs, pursuant to the recent rule change to 61G15-22.008, Record Keeping, Florida Administrative Code, FACERS is not required to report CEUs to the Florida Board of Professional Engineers (FBPE); and the FBPE will do random audits after renewal and that is when they will ask for certificates. These audits occur once every two years. So please hold on to your CEU certificates that are emailed to you following each meeting. If you desire, you can provide your certificates to Nancy Wilkins (NWilkins@fbpe.org) with FBPE and she will log your CEUs for you (but please note that this is NOT required). If you have lost any of your certificates, or have any additional questions or concerns, please contact the CEU Chair Amy Blaida at 813-468-4576 or amy.blaida@rsandh.com.

SAVE THE DATE

FACERS FALL MEETING

November 18-20, 2015

Omni Amelia Island Plantation - Nassau County

You will need to register for the FACERS

Meeting in order to reserve a hotel room. Please note that there is no FEE to attend FACERS Meetings.

Agenda will be released at a later date.



2015 JOINT EXPO AND ANNUAL CONFERENCE DAYTONA BEACH, FLORIDA

APRIL 19-23



From the Planning Phase....





2015 JOINT EXPO AND ANNUAL CONFERENCE DAYTONA BEACH, FLORIDA APRIL 19-23



To Implementation....



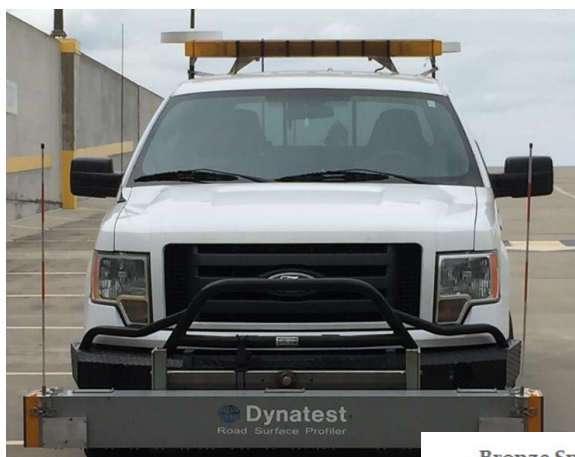


2015 JOINT EXPO AND ANNUAL CONFERENCE DAYTONA BEACH, FLORIDA

APRIL 19-23

Florida
PUBLIC WORKS
EXPO
APWA Florida Chapter

Of Pavement Preservation....



Emerald Sponsor

Dynatest[®]
THE ROAD FOR FUTURE TRAVEL

Joint Sapphire Sponsors



Gold Sponsor



Joint Gold Sponsors



Bronze Sponsors



Joint Bronze Sponsors



Welcome to the Inaugural
Pavement Preservation Night
Monday, April 20, 2015
7:30pm – 11:00pm

About this Event

Tonight we celebrate a strategy that holds significant potential to turn around our failing infrastructure. Companies involved in all aspects of preserving our roadways have come together for Pavement Preservation Night. Some specialize in asset management or diagnostic non-destructive testing, others in engineering solutions and last but not least the application of various treatments recognized worldwide for their effectiveness.

So what is P₂? Pavement preservation is the application of sound engineering and fiscal management using cost-effective treatments and existing funds to control the future condition of pavement networks. Pavement preservation strategies stretch the period of life a pavement remains in serviceable condition for the traveling public. The benefit is an improved and stable condition level at a lower unit cost per lane mile. Like brushing your teeth, we recommend everyone do it!



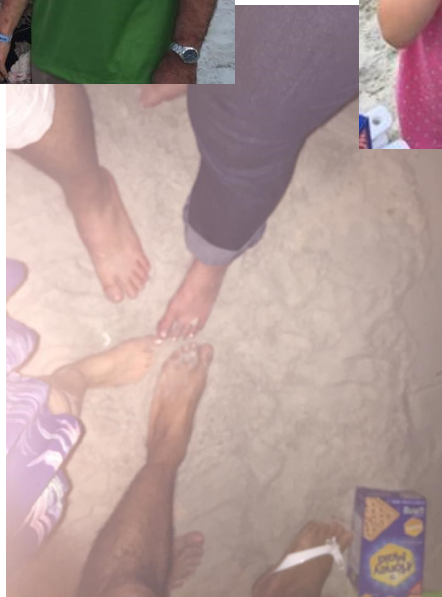
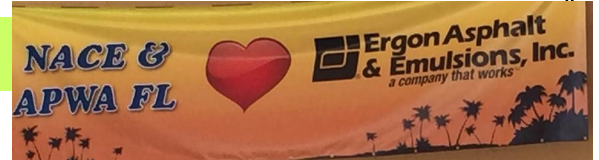


2015 JOINT EXPO AND ANNUAL CONFERENCE DAYTONA BEACH, FLORIDA

APRIL 19-23

Florida
PUBLIC WORKS
EXPO
APWA Florida Chapter

And Barefoot on the Beach....

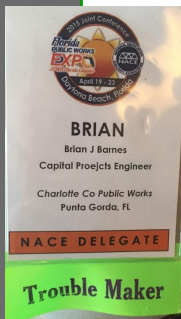




2015 JOINT EXPO AND ANNUAL CONFERENCE DAYTONA BEACH, FLORIDA APRIL 19-23



To Ramon's "Last Stand"....





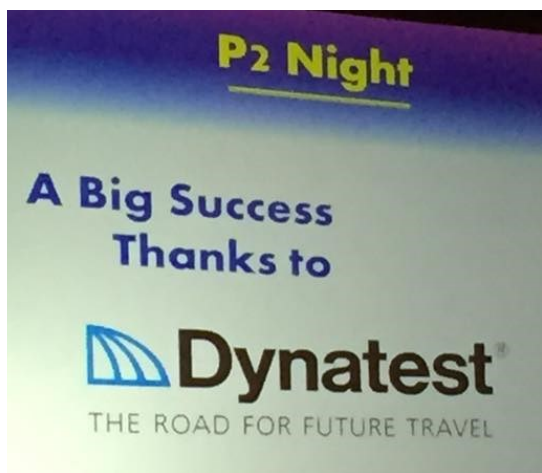
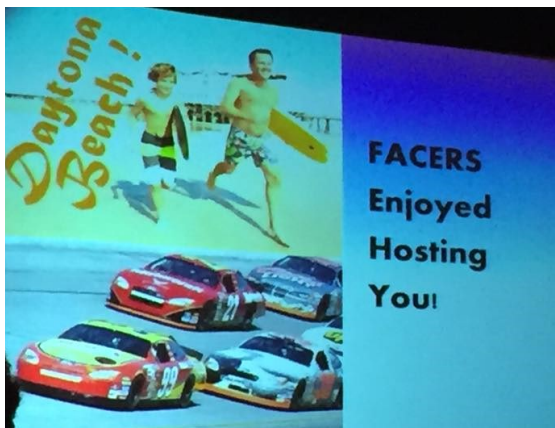
2015 JOINT EXPO AND ANNUAL CONFERENCE DAYTONA BEACH, FLORIDA

APRIL 19-23

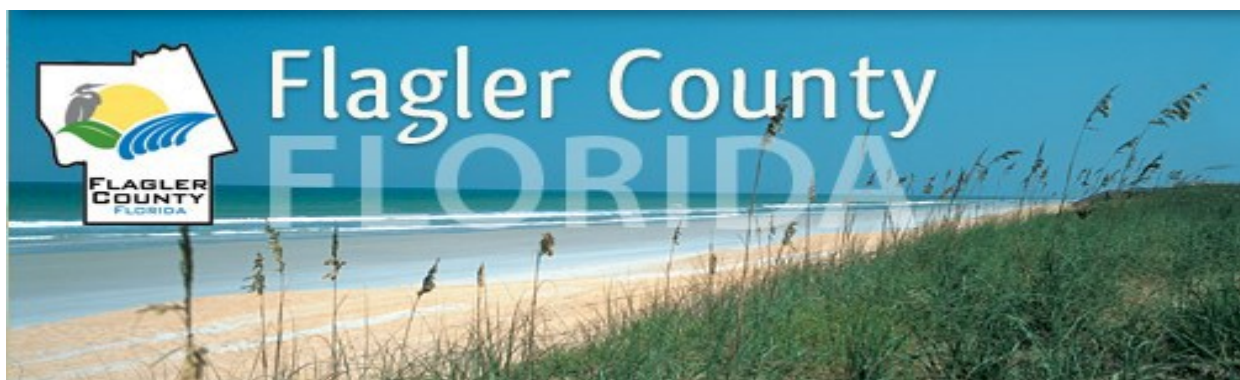


It was a **HUGE SUCCESS!!!!**

FACERS extends a special THANK YOU to all who made it happen! The Sponsors and the Planning Committee stepped up to make this joint show a HUGE success for NACE, FACERS and APWA-FL!



Project Spotlight #1



John Anderson Highway Widening and Resurfacing

On January 14, 2013, the Flagler County Board of County Commissioners approved the Small County Road Assistance Program (SCRAP) Agreement with the Florida Department of Transportation (FDOT) to design and construct the widening (adding bike lanes) and resurfacing of County Road 201/ John Anderson Highway from State Road 100 to the Volusia County Line. The Project length is approximately 3.952 miles .



Historically, John Anderson Highway once connected Miami to Jacksonville, Florida, until it was absorbed into the longer Dixie Highway around 1915. Portions of John An-

derson Highway still exist in Flagler, St. Johns and Volusia Counties.



The \$1.74 million design and construction project is being completed using in-house staff and equipment from the Road and Bridge division of Public Works, with the exception of the asphalt surfacing and thermoplastic striping, which was awarded to Halifax Paving, Inc. for \$1.05 million.

In January, 2015, staff notified all property owners and residents of Flagler County's portion of John Anderson Highway of construction activities which would commence in the next 60-90 days and that their mail-

boxes might have to be relocated in order to accommodate the increased width of the roadway.



In late March 2015, staff mobilized to the site and began excavating the shoulders in preparation for the 5' bike lane widening on both sides of the existing roadway. The placement and compaction of approximately 13,000 tons B-11 shellrock road base material in the bike lanes was completed at the end of May 2015. Intersection and driveway removal, as well as mailbox relocation and shoulder re-grading, was completed by the Road and Bridge department in the beginning of June. On June 11th, Halifax Paving, Inc mobilized to John Anderson Highway and began laying the structural leveling course of asphalt to the roadway. The friction course of asphalt was completed on June 17th. In all approximately 9,500 tons of asphalt were laid on roadway at an average depth of 3". **Halifax Paving is nearing completion on the installation of the thermoplastic roadmarkings, striping and bike lane symbols and staff is awaiting delivery of the new FDOT approved signage. The project is scheduled to be complete on or before August 31, 2015.**



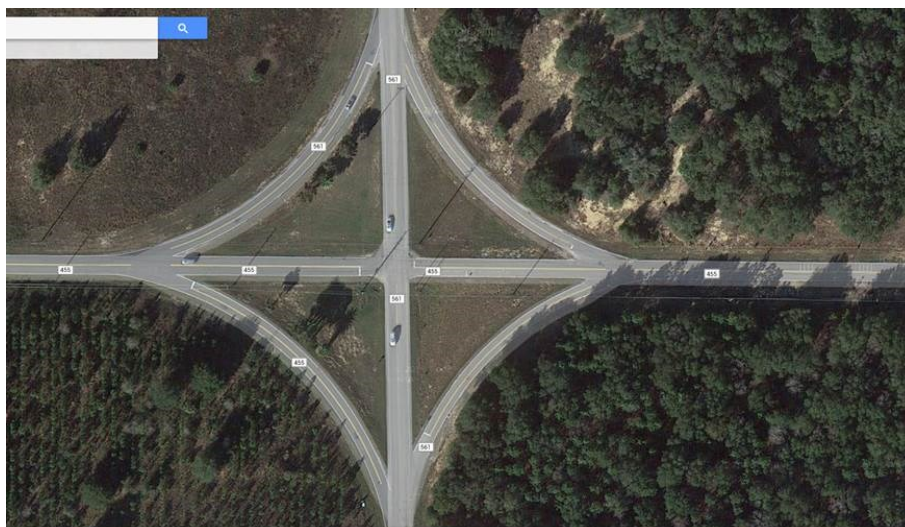
Project Spotlight #2



New Roundabout @ CR 455 and 561, Astatula, FL

Lake County just completed a Roundabout, funded through FDOT, at the intersection of CR 455 and 561 Astatula, Florida. In July 2010, an Engineering Study was performed by CES, Inc., funded by FDOT to justify the installation of a roundabout. Engineering was provided by BESH, Inc. of Tavares, with oversight from County Engineer's Office. The roundabout has an inscribed diameter of 180 feet.

The Cost of Construction for the project was \$1,240,000.00 and J. Malaver was the contractor. The original roads and intersection were built by FDOT in the 1930's. The original intersection included CR 561 as the through road with stop signs for CR 455. The original intersection also had 4 Ramps with bi directional traffic at each leg of the intersection (see aerial photo). The traffic volumes on this roadway are 8,000 N/S and 3,000 E/W. The construction of the roundabout was very complicated for both existing grades and maintenance of traffic. The grade at the center of the roundabout was elevated 5 feet to provide improved approach speeds and sight distance. The Contractor constructed 4 phases of temporary roads in order to keep traffic moving. Road closures were not allowed except for temporary events.

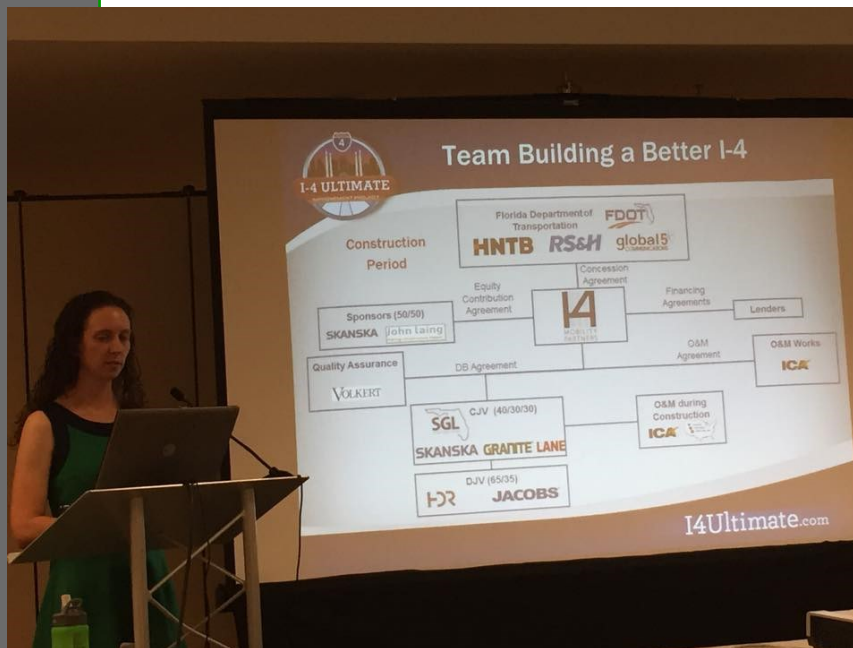




FACERS ANNUAL MEETING

June 17-19, 2015

Sawgrass Marriott - St. Johns County



Loreen Bobo, PE

I-4 Ultimate Construction Program Manager

I-4 Ultimate Update

<http://i4ultimate.com/>

I-4 ULTIMATE FAST FACTS

PROJECT LIMITS:

21 miles from west of Kirkman Road in Orange County to east of State Road 434 in Seminole County – right through the heart of Downtown Orlando

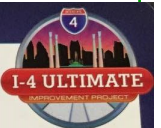
CONSTRUCTION COST: \$2.3 billion

PROJECT IMPROVEMENTS:

- » Completely rebuilds free general use lanes along entire corridor
- » Reconstructs 15 major interchanges and constructs more than 140 bridges
- » Adds four dynamic price tolled Express Lanes in the median

ESTIMATED COMPLETION: 2021

Existing lanes will remain open during peak travel times



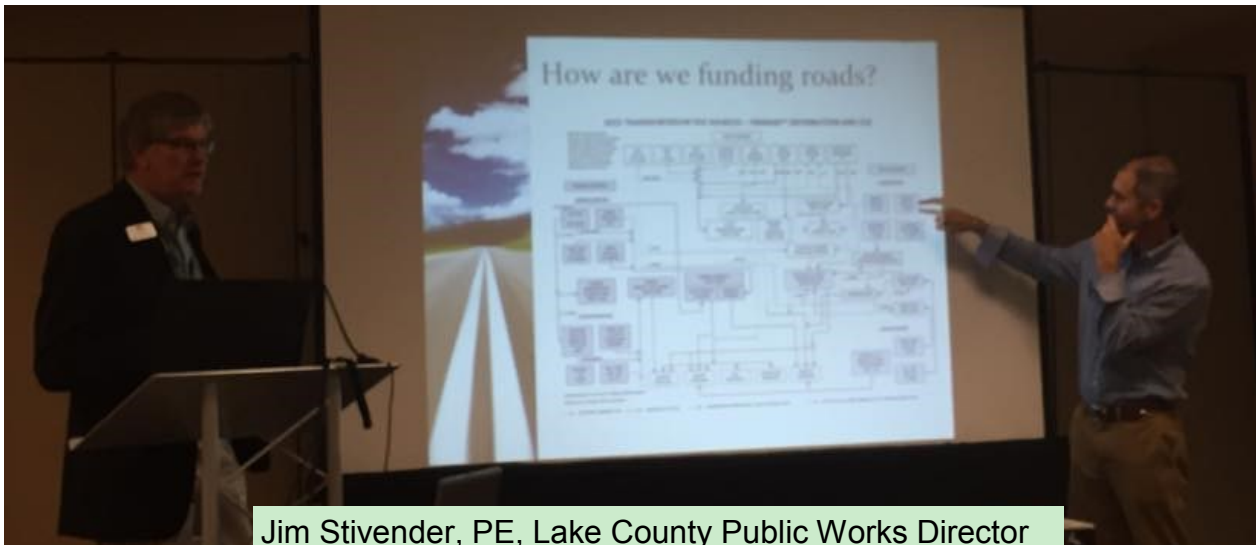
Mark Mongeau, PE

VP

Ardaman & Associates, Inc.

It's Now What's Up, But What's Down

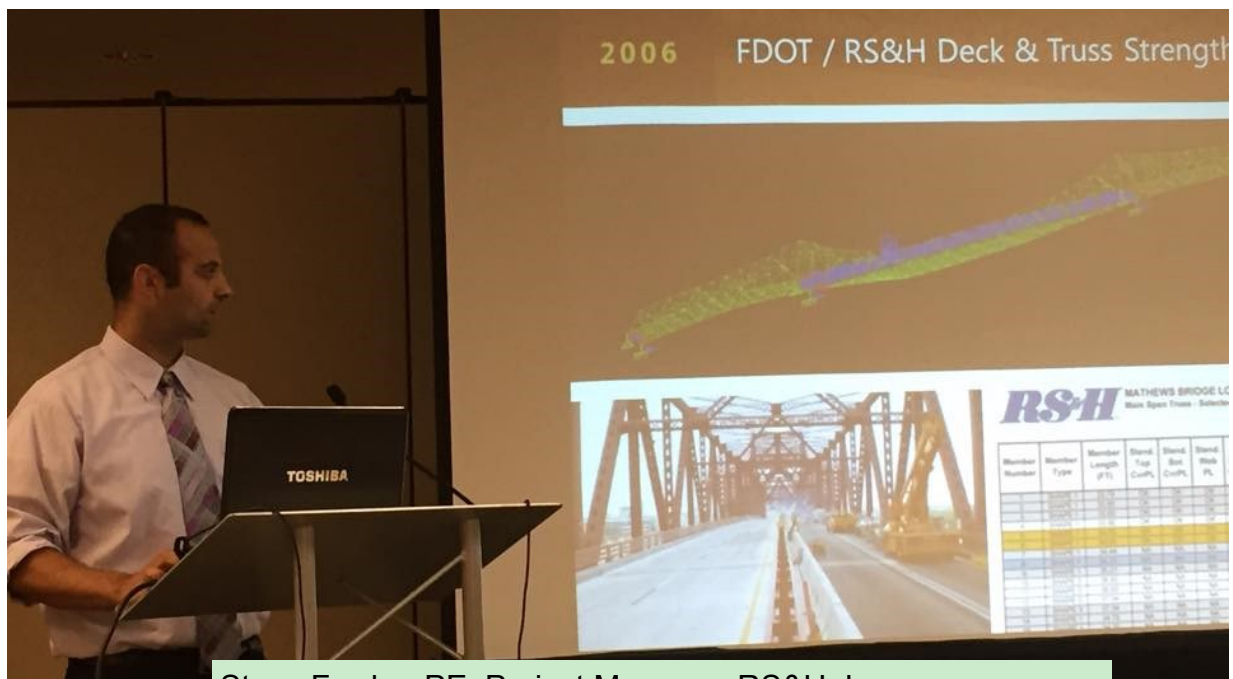




Jim Stivender, PE, Lake County Public Works Director

Chris Evers, President, Evers Infrastructure Group

Let's Fix Funding!!!



Steve Fowler, PE, Project Manager, RS&H, Inc.

When the Ship Hits the Span! The Mathews Bridge Repair

Full Video Here: <https://vimeo.com/97370834>

Jaime Carreon

Network Administrator &
Project Manager

University of Florida Trans-
portation Technology Trans-
fer Center—T²

T² Update



Chester Henson, PE

State Traffic Standards Engineer

FDOT

FDOT Lighting Standards Discussion

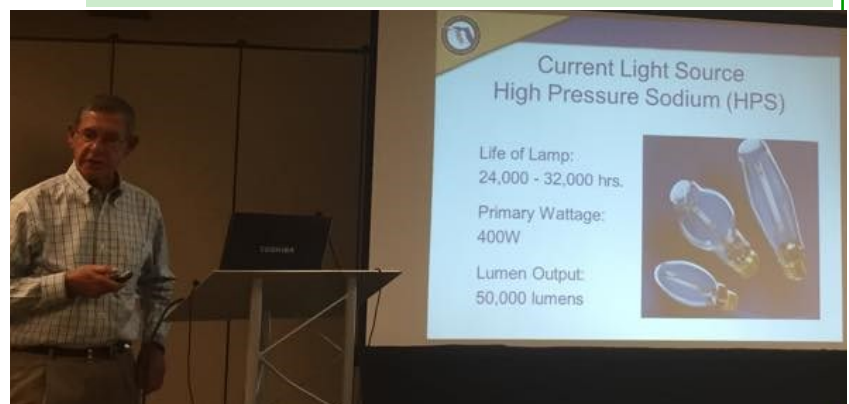


Lora B. Hollingsworth, PE

Chief Safety Officer

FDOT

FDOT Safety Program





George Webb, PE

County Engineer

Palm Beach County

FACERS Roundtable Discussions



FACERS ANNUAL MEETING JUNE 2015- ROUNDTABLE TOPICS

- ✓ FDOT signal agreement - W Webb
- ✓ Connected vehicles/autonomous vehicles (anyone discussing?) - W Webb
 - systemic safety projects
 - flashing yellow arrow (left turn signal) implementation
 - use of four way stops
 - adaptive signal control
- Any sales tax votes for November 2016?
- Any other transportation/growth management votes set for Nov 2016?
- PBC vacant Traffic Div Director
- All Aboard Florida
- Proportionate share calculation - how relate to adopted Comp Plan?
- red light cameras
- Anyone using draft Greenbook standards?
- Impact fees/mobility fees -- are counties switching to mobility?
- Waters of the US - anyone doing anything different?
- agricultural uses exempt from impact fees (packing plants)
- Charter schools and sidewalks
- CCNA selection - personal relations with firms
- Turnpike sale of property in PBC - GTW to "explain"
- FEMA flood mapping and use of LIDAR
- Use of speed "humps" (not bumps) - any maximum volumes before precluded?
- FDOT not accepting more road miles into the state system
- LAP - Community of Practice
- road diet implementation
- roundabouts vs signals
- construction (or design) change orders on LAP projects and the amount of time it takes to get one approved and whether FDOT participates 100%
- Is any County still discussing the privatization of part(s) of its road maintenance operation?
- Here is a note Joe sent to district safety engineers about the systemic analysis and the FHWA Webinar scheduled for this afternoon. Lora Hollingsworth will be at FACERS next week, so we may want to address this topic during her discussion.





Thank you for attending the FACERS
ANNUAL MEETING on June 17-19
*@ Sawgrass Marriott - St. Johns
County. It was a huge success!!*





FACERS Fall Meeting Sponsorship Form

November 18-20, 2015

Omni Amelia Island Plantation, Nassau County, Florida

AVAILABLE SPONSORSHIP

\$250

⇒ Recognition on signage during the 3-day FACERS meeting (please email company logo to amy.blaida@rsandh.com)

⇒ Special recognition and speaking opportunity during the FACERS Social Night Thursday, November 19, 2015

*****Please note credit card payments now accepted*****

NAME: _____

COMPANY: _____

DAYTIME PHONE: (____) _____

EMAIL: _____

Now Available- pay by credit card at this link!!

*OR Form and check must be received no later than November 1, 2015

*Please return form with the check

*Invoice provided upon request

MAKES CHECKS PAYABLE TO: "FACERS" - Mail to RS&H, ATTN. Amy Blaida, 301 E. Pine St., Ste. 350, Orlando, FL 32801

Questions to: Amy Blaida, FACERS Sustaining Member Director, 813-468-4576;
amy.blaida@rsandh.com



FACERS Membership

FACERS accepts membership applications for the following categories: Active, Municipal and Sustaining. You can join FACERS at this link : [FACERS Membership](#). As a member of FACERS, you will receive regular communications via email, the Quarterly FACERS Newsletter, and you will have the ability to attend the FACERS Annual Meeting and FACERS Annual Legislative Meeting (including the FACERS Social Nights) at NO COST.

Government employees receive 1st year of membership for FREE!!

Member Type Descriptions:

Active - County Engineers, Public Works Directors, County Road Superintendents, etc., who are regularly employed on a full time basis by any one of the Counties of the State of Florida.

Municipal - City Engineers, City Public Works Directors, City Road Superintendents, etc., who are regularly employed on a full time basis by any one of the Cities of the State of Florida.

Sustaining - All other persons who are interested in the affairs of FACERS.

***Select your Fee Type (All FACERS Members can also sign up for an additional fee to be a member of NACE):**

Explanation of fees

- ◇ **FACERS (public agency employees/Active & Municipal Members) - \$75**
- ◇ **FACERS (non public agency employees/Sustaining Members) - \$125**
- ◇ **NACE (National Association of County Engineers) - \$150**

After your registration is complete, please send your check to:

Make checks payable to "FACERS"

**FACERS
c/o Florida Association of Counties
100 South Monroe Street
Tallahassee, FL 32301**