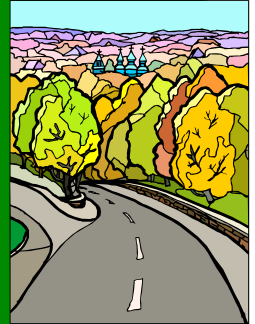


FACERS News



INSIDE THIS ISSUE:

President's Message	1
Social Night	3
Web-Cast	4
Member Spotlight	5
Annual Conf Recap	6
FACERS Awards	7
LAP Report	8
What Were They Thinking ?	9
T2 Center Classes	10

FACERS News

Editor and Chief—
Carolyn Steves



Next Edition
November 2011

Submission Deadline for
the next Issue is 10/21/11

VOLUME 4 EDITION 4

OCTOBER 2011



A Message from the President

I thank you for the vote of confidence in electing me to serve as President of FACERS over this next year. I previously served a number of years on the Board of Directors, two years as Secretary, and then Treasurer, Vice President and now President. I enjoyed my time in all those positions, but I think working this last year on our two Conference Meetings agendas and speakers was my favorite time of service (although some said it could be the toughest job). I received a lot of help from FACERS members as well with suggestions on speakers. It also helps being a County Engineer for the last 20 years and having some contacts. Jonathan Page has been working on the Conference Agenda for this November Nov. 16th to 18th in Destin and it looks like we have a great list of speakers. We have Ananth Prasad

the Secretary of the Florida Dept. of Transportation who will be speaking to us on Friday morning of the conference. Congratulations Jonathan for getting a great speakers list together!

This message will find you beginning a new budget year. Things have not been easy for Public Works and other Departments within our Counties trying to hold everything together during these tough economic times. County Public Works and Elected Officials have been busy trying to empty out closets and sweep dust bunnies out of corners looking for any crumb of funding they can to keep things going. You have been busy these last few years making the tough decisions and dealing with concerns over crumbling infrastructure from roads and bridges to water, sewer, and solid waste. If you were fortunate, you didn't have too many layoffs, and you still have some semblance of a resurfacing program. The Federal Stimulus ARRA helped a number of us get caught up on some much needed resurfacing, including the County I work for (Lake). We were also fortunate to be construction ready and awarded construction funds for three bridge replacement projects totaling about nine million dollars. Fortunately most of us believe the worst is over and the economy will be leveling off, albeit growth could be slow for some time to come. My home county currently has a committee working to sort through all the possible funding sources for road improvements including the existing gas tax, sales tax, impact fees, and general fund. We have the local option gas taxes sun-setting starting in 2014 and which must be brought back to our Board for renewal at two pennies a year in 2014, 2015, 2016, and then after that comes a renewal of a share of the penny sales tax in 2017. You may have faced or will be facing the same issues shortly.

Continued on Page 2

Message from the President (Con't)

As for FACERS, we continue to believe that our best days are ahead. Amongst the struggles over our individual county finances, we continue to be supported by a very busy group of County Public Works employee members who work tirelessly to ensure that we have a voice at the State and National Levels. FACERS continues to have members who serve and have a presence on many state and federal committees, in the National Association of County Engineers (NACE), and other equally important organizations and associations. We have more room to improve, and so I request that you contact your adjacent counties, cities, and consultants to consider joining FACERS as a Full, City, or Sustaining member. We currently have about 50% of our counties having a Public Works employee as a member in FACERS. We have some holes to fill! A map will be up shortly on our website showing which counties are currently members. One of the main benefits of membership in FACERS as a Public Works employee, is knowing that we are not alone! You can put on a blindfold and cross county lines, and we all seem to have the same ongoing issues. The good thing is that with FACERS you can share your problems, AND your solutions. So get involved, attend our Conferences and get ready for a great year ahead!

Fred Schneider

Lake County



Billy Hattaway New District 1 Secretary, FDOT



A good friend of FACERS, Billy Hattaway has been named as the new FDOT District 1 Secretary.

"Billy Hattaway brings his strong record of achievement and his vast background and experience to the Department. Billy will build on the strong foundation in District One and will deliver the bold transportation agenda the Governor has implemented. Billy's private and public sector knowledge make him an outstanding addition to the Department,"

FDOT Secretary Ananth Prasad said in a press release.,

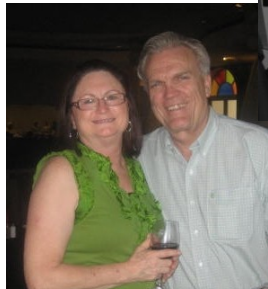
CONGRATULATIONS BILLY!!!!

Social Night at the Annual Conference

Due to the hard work by Amy Blaida, RS&H we had a wonderful "Social Night" at the Annual Conference in Orlando in June. Since the conference was head just outside EPOCT, Amy selected Bongos Cuban Café in Downtown Disney. We took over the second floor balcony, and in our usual way, we had so much fun the rest of the restaurant wanted to join us. Amy also recruited the following firms to help defray the cost of the room and heavy appetizers:

- Asphalt Paving Systems
- Cutler Repaving
- E.J. Breneman
- Roadway Management
- RS&H
- VHB

Please join Amy in expressing our thanks to these firms.



2011 FACERS Annual Meeting On the Web!!

Due to the current economic time where many of us cannot travel to our semi-annual conferences, to help our members, the Board of Directors searched for a way to bring the information presented at the conferences to the membership. We experimented In November of 2010 by web-casting one day of our meeting. Based on the positive feedback that was received, the Board made the decision to web-cast both days. In order to accomplish this, your Board of Directors turned to the Technology Transfer Center (T2 Center) in Gainesville. Janet Degner, T2 Center Director, agreed to provide FACERS the personnel, expertise and equipment to make this happen.



AND... when I say personnel, I mean Jaime Carreon, who we owe a special thanks. You see, Jaime was the person who produced, directed, set up all the equipment, managed, camera operator, and was the voice of all on-line questions that were submitted. Needless to say Jaime was a beehive of activity.

Jaime Carreon is the Network Administrator and Assistant Project Manager at the FL Technology Transfer Center. In these roles he is responsible for the computer network for the center as well as in assisting in the planning and running of conferences, Showcases, and other special events. Jaime has eight years of experience in the IT field and is currently pursuing his Master's Degree in Information Systems and Operations Management at the University of Florida. He holds a Bachelor's Degree from Louisiana State University.



THANKS JAJME !!!!

Member Spotlight:

Bill Steves



Bill Steves is ***HAPPILY*** married to the very lovely Carolyn Steves, who happens to be the Editor and Chief of this FACERS News. Bill is almost a Florida native. He was actually born in Camden, New Jersey, while his father was attending the Pennsylvania Optometric College, and the family moved to Tampa when he was two years old.

He graduated from Hillsborough High School, Tampa, in 1964, and graduated from the University of South Florida with a Bachelor of Science in Engineering in 1973. His college days were interrupted by a 4-year stint with the U.S. Air Force.

Bill has three children and four grandchildren. He enjoys spending time on his boat, the *LQQK SEA*, in Sarasota Bay, as well as at their 2nd home in Fairfield Glade, Tennessee. Bill also enjoys a good cigar...a Padron...every once in a while.

Bill has over 40 years of experience in many aspects of civil engineering, program and project management, master planning, surveying, etc. He is the Sarasota Office Leader and Senior Project Manager for Reynolds, Smith and Hills, Inc., and has been with RS&H for over 13 years. Bill also serves as the Consulting County Engineer for Madison County, Florida.

He is a Registered Professional Engineer in the states of Florida, Georgia, and Alabama. Besides being a member of FACERS (CEU/PDH Coordinator), he is Treasurer of the Suncoast Branch of APWA, Port of Manatee Propeller Club Director, a Life Member of ASCE, and Madison County Code Enforcement Board Member.

Bill received the **2010 FACERS Rural Engineer Award** during the 2011 FACERS Annual Conference in Orlando in June.

2011 FACERS Annual Meeting

The programs get better and better at each conference. Everyone who attended the 2011 FACERS Annual Conference in June was treated to an educational and informational program. By attending, I don't mean only those sitting in the room, but all those that attended via the live web cast of the entire program on Wednesday and Thursday.

During these two days there was information on railroad crossing agreements, adaptive sign controls, litigation on road projects, traffic calming, new EPA policies, eminent domain, etc. Also FDOT presented the latest on the work Tallahassee is doing to make the LAP program as "county friendly" as possible. This includes the establishment of a joint committee of FDOT and FACERS personnel to work on procedures we all can live with.



Anyone who missed the conference, or wants to relive the excitement can go to the FACERS web site, www.facers.org to download each of the presentations.

We were also honored to have 2 distinguished guests with us during the conference. The first was Mark Craft, the NACE president. Mark joined us to express NACE's interest in Florida, since we are working to bring the Annual NACE Conference back to the Sunshine State in the near future.

The other honored guest was Martin Knoff, FHWA Florida Division Administrator. Martin talked about the ways he would like to work with both the FDOT and the Counties throughout Florida. Martin also talked about what was going on within the FHWA and what he saw coming down from Congress as far as highway funding and regulation. He was very interested in the work FACERS and FDOT are doing to make the LAP program better within Florida.

The conference ended on Friday with our annual business meeting and the presentation of the 2011 FACERS awards and the election of the 2011 Officers (from right to left)



(A)

(B)

(C)

(D)

(A) Secretary Ryan Douglas

Okaloosa Co

(B) Treasurer John Newton

Hillsborough Co

(C) President Fred Schneider

Lake Co

(D) Vice President Jonathan Page

Nassau Co

FACERS Award Winners

The 2011 FACERS Awards were presented at the FACERS Annual Meeting in June.



RURAL ENGINEER OF THE YEAR

Bill Steves

Madison County

RURAL



ENGINEER OF THE YEAR

Shane Witter

Nassau County



PUBLIC WORKS EMPLOYEE OF THE YEAR

Don Rainard

Plant City



LOCAL / STATE AGENCY COLLABORATION OF THE YEAR

Faith Alkhatib

Flagler County



URBAN ENGINEER OF THE YEAR

George Recktenwald

Volusia County



PUBLIC WORKS TEAM OF THE YEAR

Orange County

LAP Status Report

By John Goodknight

Since 2010, FACERS and FDOT have been working together through a “Community of Practice (COP)” initiative to streamline and improve the consistency with which Local Agency Program (LAP) projects are administered. Ramon Gavarrete’s article in the April, 2011 FACERS Newsletter (http://www.facers.org/?page_id=97) describes the COP and other FACERS initiatives to improve the LAP process at both the state and national levels.

The COP has formed four separate subgroups to deal with specific problems and issues in design, construction, scheduling and performance, and specifications. These subgroups are comprised of representatives of FACERS, DOT districts, the Central Office, and the State Materials Office. Some of the concerns identified in the initial discussions between FACERS and FDOT included: level of detail and review required for plans submittals, construction documentation, on schedule performance, criteria for LAP certification by local agencies, consistency in application of rules and policies, and project selection. These and other issues are being addressed by the various subgroups.

We expect the results of this group’s efforts to take several forms.

- Changes to procedure that result from the COP activities will be incorporated into an upcoming revision to the LAP Manual. http://www.dot.state.fl.us/projectmanagementoffice/LAP/LAP_TOC.shtm.
- Changes to procedure that result from the COP activities will be incorporated into an upcoming revision to the LAP Manual. http://www.dot.state.fl.us/projectmanagementoffice/LAP/LAP_TOC.shtm.
- Clarifications and refinements of policies are being documented in the form of “Asked and Answered” documents. The A&A documents also provide a mechanism for early implementation of changes that will be ultimately included in the LAP Manual. These are available at: <http://www.dot.state.fl.us/specificationsoffice/LAP/DefaultAA.shtm>
- The LAP specifications (also known as the “Big Four”) dealing with Asphalt, Concrete, Earthwork, and Landscaping are being updated. Currently, these are being reviewed within FDOT. We understand that these will soon be made available for public comment using FDOT’s standard review process. After the revisions have been posted you should be able to submit your comments directly to FDOT. This procedure is described at: <http://www2.dot.state.fl.us/SpecificationsEstimates/Development/IndustryReview.aspx>.

FACERS Legislative Meeting

Remember all roads lead to Sandestin Beach Resort (in the Florida panhandle) November 16 thru November 18. That's where we will meet for our 2011 Legislative Conference in conjunction with the Florida Association of Counties (FAC). Now, you can go to the FAC website www.fl-counties.com to book your room and register for the Destin meeting. So don't delay, do it today!!

See Ya in Destin!



In this issue of FACERS News, again we bring you a sign that raises more questions than answers.

Keep an eye out and send us a picture of a sign you feel somehow just did not quite hit the nail on the head.

carolyn.steves@rsandh.com or brian.barnes@charlottefl.com



What's the rule?

"I" before "E" except after "C" OR was it Stop Bar before Crosswalk except here!!!

The T2 Center's Available Classes

The following are the available classes through the T2 Center. Contact Celio Alessandro Ramos, Workforce Development Coordinator Florida Technology Transfer (T²) Center cramos1976@ufl.edu or (352) 273-1670

Course	Start Date	End Date	Location
Advanced Maintenance of Traffic - Refresher	10/18/2011	10/18/2011	Pompano Beach
Intermediate Maintenance of Traffic - Refresher	10/18/2011	10/18/2011	Gainesville
Intermediate Maintenance of Traffic - Refresher	10/18/2011	10/18/2011	Orlando
Pilot/Escort Flagging Refresher	10/18/2011	10/18/2011	Gainesville
Road Safety 365: A Workshop for Local Governments	10/18/2011	10/18/2011	Gainesville
Advanced Maintenance of Traffic	10/19/2011	10/21/2011	Pompano Beach
Intermediate Maintenance of Traffic	10/19/2011	10/20/2011	Gainesville
Intermediate Maintenance of Traffic	10/19/2011	10/20/2011	Orlando
Advanced Maintenance of Traffic - Refresher	10/24/2011	10/24/2011	Temple Terrace
Advanced Maintenance of Traffic	10/25/2011	10/27/2011	Temple Terrace
Advanced Maintenance of Traffic - Refresher	10/25/2011	10/25/2011	Cape Coral
Advanced Maintenance of Traffic	10/26/2011	10/28/2011	Cape Coral
Intermediate Maintenance of Traffic - Refresher	11/1/2011	11/1/2011	Temple Terrace
Pilot/Escort Flagging	11/1/2011	11/1/2011	Gainesville
Intermediate Maintenance of Traffic	11/2/2011	11/3/2011	Temple Terrace
Intermediate Maintenance of Traffic - Refresher	11/2/2011	11/2/2011	North Miami Beach
Intermediate Maintenance of Traffic	11/8/2011	11/9/2011	North Miami Beach
Bucket Truck Safety/Hands-on	11/9/2011	11/9/2011	Pompano Beach
Intermediate Maintenance of Traffic - Refresher	11/14/2011	11/14/2011	Naples
Advanced Maintenance of Traffic - Refresher	11/15/2011	11/15/2011	Gainesville
Advanced Maintenance of Traffic - Refresher	11/15/2011	11/15/2011	Orlando

The T2 Center's Available Classes

Course	Start Date	End Date	Location
Intermediate Maintenance of Traffic	11/15/2011	11/16/2011	Naples
Intermediate Maintenance of Traffic - Refresher	11/15/2011	11/15/2011	Cape Coral
Pilot/Escort Flagging	11/15/2011	11/15/2011	Fort Myers
Pilot/Escort Flagging Refresher	11/15/2011	11/15/2011	Gainesville
Advanced Maintenance of Traffic	11/16/2011	11/18/2011	Gainesville
Advanced Maintenance of Traffic	11/16/2011	11/18/2011	Orlando
Intermediate Maintenance of Traffic	11/16/2011	11/17/2011	Cape Coral
Advanced Maintenance of Traffic - Refresher	11/29/2011	11/29/2011	Crestview
Advanced Maintenance of Traffic	11/30/2011	12/2/2011	Crestview
Mobile Equipment and Internal Work Zone Safety	11/30/2011	11/30/2011	Port Charlotte
Advanced Maintenance of Traffic - Refresher	12/6/2011	12/6/2011	Pompano Beach
Intermediate Maintenance of Traffic - Refresher	12/6/2011	12/6/2011	Orlando
Pilot/Escort Flagging	12/6/2011	12/6/2011	Orlando
Advanced Maintenance of Traffic	12/7/2011	12/9/2011	Pompano Beach
Intermediate Maintenance of Traffic	12/7/2011	12/8/2011	Orlando
Advanced Maintenance of Traffic - Refresher	12/13/2011	12/13/2011	Tampa
Intermediate Maintenance of Traffic - Refresher	12/13/2011	12/13/2011	Crestview
Pilot/Escort Flagging Refresher	12/13/2011	12/13/2011	Gainesville
Advanced Maintenance of Traffic	12/14/2011	12/16/2011	Tampa
Advanced Maintenance of Traffic - Refresher	12/14/2011	12/14/2011	North Miami Beach
Intermediate Maintenance of Traffic	12/14/2011	12/15/2011	Crestview
Advanced Maintenance of Traffic	12/20/2011	12/21/2011	North Miami
Advanced Maintenance of Traffic - Refresher	1/3/2012	1/3/2012	Tallahassee
Advanced Maintenance of Traffic	1/4/2012	1/6/2012	Tallahassee
Intermediate Maintenance of Traffic - Refresher	1/10/2012	1/10/2012	Crestview
Intermediate Maintenance of Traffic	1/11/2012	1/12/2012	Crestview

Course	Start Date	End Date	Location
Intermediate Maintenance of Traffic - Refresher	1/17/2012	1/17/2012	Orlando
Intermediate Maintenance of Traffic	1/18/2012	1/19/2012	Orlando
Advanced Maintenance of Traffic - Refresher	1/24/2012	1/24/2012	Temple Terrace
Intermediate Maintenance of Traffic - Refresher	1/24/2012	1/24/2012	Gainesville
Intermediate Maintenance of Traffic - Refresher	1/24/2012	1/24/2012	Punta Gorda
Advanced Maintenance of Traffic	1/25/2012	1/27/2012	Temple Terrace
Intermediate Maintenance of Traffic	1/25/2012	1/26/2012	Gainesville
Intermediate Maintenance of Traffic	1/25/2012	1/26/2012	Punta Gorda
Advanced Maintenance of Traffic - Refresher	1/31/2012	1/31/2012	Gainesville
Advanced Maintenance of Traffic	2/1/2012	2/3/2012	Gainesville
Intermediate Maintenance of Traffic - Refresher	2/1/2012	2/1/2012	North Miami Beach
Advanced Maintenance of Traffic - Refresher	2/7/2012	2/7/2012	Crestview
Intermediate Maintenance of Traffic	2/7/2012	2/8/2012	North Miami Beach
Advanced Maintenance of Traffic	2/8/2012	2/10/2012	Crestview
Advanced Maintenance of Traffic - Refresher	2/14/2012	2/14/2012	Orlando
Intermediate Maintenance of Traffic - Refresher	2/14/2012	2/14/2012	Temple Terrace
Advanced Maintenance of Traffic	2/15/2012	2/17/2012	Orlando
Intermediate Maintenance of Traffic	2/15/2012	2/16/2012	Temple Terrace
Advanced Maintenance of Traffic - Refresher	2/28/2012	2/28/2012	Punta Gorda
Advanced Maintenance of Traffic	2/29/2012	3/2/2012	Punta Gorda
Intermediate Maintenance of Traffic - Refresher	3/6/2012	3/6/2012	Crestview
Intermediate Maintenance of Traffic - Refresher	3/6/2012	3/6/2012	Punta Gorda
Intermediate Maintenance of Traffic - Refresher	3/6/2012	3/6/2012	Tallahassee
Intermediate Maintenance of Traffic	3/7/2012	3/8/2012	Crestview
Intermediate Maintenance of Traffic	3/7/2012	3/8/2012	Punta Gorda
Intermediate Maintenance of Traffic	3/7/2012	3/8/2012	Tallahassee

The T2 Center's Available Classes

Course	Start Date	End Date	Location
Intermediate Maintenance of Traffic - Refresher	1/17/20 12	1/17/20 12	Orlando
Intermediate Maintenance of Traffic	1/18/20 12	1/19/20 12	Orlando
Advanced Maintenance of Traffic - Refresher	1/24/20 12	1/24/20 12	Temple Terrace
Intermediate Maintenance of Traffic - Refresher	1/24/20 12	1/24/20 12	Gainesville
Intermediate Maintenance of Traffic - Refresher	1/24/20 12	1/24/20 12	Punta Gorda
Advanced Maintenance of Traffic	1/25/20 12	1/27/20 12	Temple Terrace
Intermediate Maintenance of Traffic	1/25/20 12	1/26/20 12	Gainesville
Intermediate Maintenance of Traffic	1/25/20 12	1/26/20 12	Punta Gorda
Advanced Maintenance of Traffic - Refresher	1/31/20 12	1/31/20 12	Gainesville
Advanced Maintenance of Traffic	2/1/201 2	2/3/201 2	Gainesville
Intermediate Maintenance of Traffic - Refresher	2/1/201 2	2/1/201 2	North Miami Beach
Advanced Maintenance of Traffic - Refresher	2/7/201 2	2/7/201 2	Crestview
Intermediate Maintenance of Traffic	2/7/201 2	2/8/201 2	North Miami Beach
Advanced Maintenance of Traffic	2/8/201 2	2/10/20 12	Crestview
Advanced Maintenance of Traffic - Refresher	2/14/20 12	2/14/20 12	Orlando
Intermediate Maintenance of Traffic - Refresher	2/14/20 12	2/14/20 12	Temple Terrace
Advanced Maintenance of Traffic	2/15/20 12	2/17/20 12	Orlando
Intermediate Maintenance of Traffic	2/15/20 12	2/16/20 12	Temple Terrace
Advanced Maintenance of Traffic - Refresher	2/28/20 12	2/28/20 12	Punta Gorda
Advanced Maintenance of Traffic	2/29/20 12	3/2/201 2	Punta Gorda
Intermediate Maintenance of Traffic - Refresher	3/6/201 2	3/6/201 2	Crestview
Intermediate Maintenance of Traffic - Refresher	3/6/201 2	3/6/201 2	Punta Gorda
Intermediate Maintenance of Traffic - Refresher	3/6/201 2	3/6/201 2	Tallahassee
Intermediate Maintenance of Traffic	3/7/201 2	3/8/201 2	Crestview
Intermediate Maintenance of Traffic	3/7/201 2	3/8/201 2	Punta Gorda

Course	Start Date	End Date	Location
Intermediate Maintenance of Traffic	3/7/20 12	3/8/20 12	Tallahassee
Advanced Maintenance of Traffic - Refresher	3/14/2 012	3/14/2 012	North Miami Beach
Intermediate Maintenance of Traffic - Refresher	3/20/2 012	3/20/2 012	Gainesville
Intermediate Maintenance of Traffic - Refresher	3/20/2 012	3/20/2 012	Orlando
Intermediate Maintenance of Traffic	3/21/2 012	3/22/2 012	Gainesville
Intermediate Maintenance of Traffic	3/21/2 012	3/22/2 012	Orlando
Advanced Maintenance of Traffic - Refresher	3/27/2 012	3/27/2 012	Temple Terrace
Advanced Maintenance of Traffic	3/28/2 012	3/29/2 012	North Miami Beach
Advanced Maintenance of Traffic	3/28/2 012	3/30/2 012	Temple Terrace
Advanced Maintenance of Traffic - Refresher	4/10/2 012	4/10/2 012	Gainesville
Advanced Maintenance of Traffic	4/11/2 012	4/13/2 012	Gainesville
Intermediate Maintenance of Traffic - Refresher	4/11/2 012	4/11/2 012	North Miami Beach
Advanced Maintenance of Traffic - Refresher	4/17/2 012	4/17/2 012	Crestview
Advanced Maintenance of Traffic	4/18/2 012	4/20/2 012	Crestview
Intermediate Maintenance of Traffic	4/25/2 012	4/26/2 012	North Miami Beach
Intermediate Maintenance of Traffic - Refresher	5/1/20 12	5/1/20 12	Punta Gorda
Intermediate Maintenance of Traffic - Refresher	5/1/20 12	5/1/20 12	Temple Terrace
Intermediate Maintenance of Traffic	5/2/20 12	5/3/20 12	Punta Gorda
Intermediate Maintenance of Traffic	5/2/20 12	5/3/20 12	Temple Terrace
Advanced Maintenance of Traffic - Refresher	5/8/20 12	5/8/20 12	Orlando
Advanced Maintenance of Traffic	5/9/20 12	5/11/2 012	Orlando
Advanced Maintenance of Traffic - Refresher	5/14/2 012	5/14/2 012	Tallahassee
Advanced Maintenance of Traffic	5/15/2 012	5/17/2 012	Tallahassee
Advanced Maintenance of Traffic - Refresher	5/15/2 012	5/15/2 012	Punta Gorda
Intermediate Maintenance of Traffic - Refresher	5/15/2 012	5/15/2 012	Crestview
Advanced Maintenance of Traffic	5/16/2 012	5/18/2 012	Punta Gorda

The T2 Center's Available Classes

Course	Start Date	End Date	Location
Intermediate Maintenance of Traffic	5/16/2012	5/17/2012	Crestview
Intermediate Maintenance of Traffic - Refresher	5/22/2012	5/22/2012	Gainesville
Intermediate Maintenance of Traffic - Refresher	5/22/2012	5/22/2012	Orlando
Intermediate Maintenance of Traffic	5/23/2012	5/24/2012	Gainesville
Intermediate Maintenance of Traffic	5/23/2012	5/24/2012	Orlando
Advanced Maintenance of Traffic - Refresher	6/5/2012	6/5/2012	Temple Terrace
Advanced Maintenance of Traffic	6/6/2012	6/8/2012	Temple Terrace
Advanced Maintenance of Traffic - Refresher	6/12/2012	6/12/2012	Gainesville
Intermediate Maintenance of Traffic	6/12/2012	6/13/2012	North Miami Beach
Intermediate Maintenance of Traffic - Refresher	6/12/2012	6/12/2012	Cape Coral
Advanced Maintenance of Traffic	6/13/2012	6/15/2012	Gainesville
Intermediate Maintenance of Traffic	6/13/2012	6/14/2012	Cape Coral
Intermediate Maintenance of Traffic - Refresher	6/20/2012	6/20/2012	North Miami Beach
Advanced Maintenance of Traffic - Refresher	6/26/2012	6/26/2012	Cape Coral
Advanced Maintenance of Traffic - Refresher	6/26/2012	6/26/2012	Tallahassee
Advanced Maintenance of Traffic	6/27/2012	6/29/2012	Cape Coral
Advanced Maintenance of Traffic	6/27/2012	6/29/2012	Tallahassee
Advanced Maintenance of Traffic - Refresher	7/17/2012	7/17/2012	Orlando
Intermediate Maintenance of Traffic - Refresher	7/17/2012	7/17/2012	Temple Terrace
Advanced Maintenance of Traffic	7/18/2012	7/20/2012	Orlando
Advanced Maintenance of Traffic - Refresher	7/18/2012	7/18/2012	North Miami Beach
Intermediate Maintenance of Traffic	7/18/2012	7/19/2012	Temple Terrace
Intermediate Maintenance of Traffic - Refresher	7/24/2012	7/24/2012	Gainesville
Intermediate Maintenance of Traffic - Refresher	7/24/2012	7/24/2012	Punta Gorda
Intermediate Maintenance of Traffic	7/25/2012	7/26/2012	Gainesville

Course	Start Date	End Date	Location
Intermediate Maintenance of Traffic	7/25/2012	7/26/2012	Punta Gorda
Advanced Maintenance of Traffic	7/26/2012	7/27/2012	North Miami Beach
Advanced Maintenance of Traffic - Refresher	8/7/2012	8/7/2012	Temple Terrace
Advanced Maintenance of Traffic	8/8/2012	8/10/2012	Temple Terrace
Intermediate Maintenance of Traffic - Refresher	8/14/2012	8/14/2012	Cape Coral
Intermediate Maintenance of Traffic - Refresher	8/14/2012	8/14/2012	Orlando
Intermediate Maintenance of Traffic	8/15/2012	8/16/2012	Cape Coral
Intermediate Maintenance of Traffic	8/15/2012	8/16/2012	Orlando
Intermediate Maintenance of Traffic - Refresher	8/15/2012	8/15/2012	North Miami Beach
Advanced Maintenance of Traffic - Refresher	8/28/2012	8/28/2012	Cape Coral
Advanced Maintenance of Traffic	8/29/2012	8/31/2012	Cape Coral
Intermediate Maintenance of Traffic	8/29/2012	8/30/2012	North Miami Beach
Advanced Maintenance of Traffic - Refresher	9/11/2012	9/11/2012	Gainesville
Intermediate Maintenance of Traffic - Refresher	9/11/2012	9/11/2012	Punta Gorda
Advanced Maintenance of Traffic	9/12/2012	9/14/2012	Gainesville
Intermediate Maintenance of Traffic	9/12/2012	9/13/2012	Punta Gorda
Advanced Maintenance of Traffic - Refresher	9/17/2012	9/17/2012	Tallahassee
Advanced Maintenance of Traffic	9/18/2012	9/20/2012	Tallahassee
Intermediate Maintenance of Traffic - Refresher	9/25/2012	9/25/2012	Temple Terrace
Intermediate Maintenance of Traffic	9/26/2012	9/27/2012	Temple Terrace
Intermediate Maintenance of Traffic - Refresher	10/9/2012	10/9/2012	Tallahassee
Intermediate Maintenance of Traffic	10/10/2012	10/11/2012	Tallahassee
Intermediate Maintenance of Traffic - Refresher	10/10/2012	10/10/2012	North Miami Beach
Advanced Maintenance of Traffic - Refresher	10/16/2012	10/16/2012	Punta Gorda
Intermediate Maintenance of Traffic - Refresher	10/16/2012	10/16/2012	Cape Coral
Advanced Maintenance of Traffic	10/17/2012	10/19/2012	Punta Gorda
Intermediate Maintenance of Traffic	10/17/2012	10/18/2012	Cape Coral
Intermediate Maintenance of Traffic	10/17/2012	10/18/2012	North Miami Beach

The T2 Center's Available Classes

Course	Start Date	End Date	Location
Advanced Maintenance of Traffic - Refresher	10/23/2012	10/23/2012	Temple Terrace
Intermediate Maintenance of Traffic - Refresher	10/23/2012	10/23/2012	Gainesville
Intermediate Maintenance of Traffic - Refresher	10/23/2012	10/23/2012	Orlando
Advanced Maintenance of Traffic	10/24/2012	10/26/2012	Temple Terrace
Intermediate Maintenance of Traffic	10/24/2012	10/25/2012	Gainesville
Intermediate Maintenance of Traffic	10/24/2012	10/25/2012	Orlando
Advanced Maintenance of Traffic	11/1/2012	11/2/2012	North Miami Beach
Advanced Maintenance of Traffic - Refresher	11/6/2012	11/6/2012	Gainesville
Intermediate Maintenance of Traffic - Refresher	11/6/2012	11/6/2012	Punta Gorda
Intermediate Maintenance of Traffic - Refresher	11/6/2012	11/6/2012	Temple Terrace
Advanced Maintenance of Traffic	11/7/2012	11/9/2012	Gainesville
Intermediate Maintenance of Traffic	11/7/2012	11/8/2012	Punta Gorda
Intermediate Maintenance of Traffic	11/7/2012	11/8/2012	Temple Terrace
Advanced Maintenance of Traffic - Refresher	11/13/2012	11/13/2012	Orlando
Advanced Maintenance of Traffic	11/14/2012	11/16/2012	Orlando
Advanced Maintenance of Traffic - Refresher	11/14/2012	11/14/2012	North Miami Beach
Intermediate Maintenance of Traffic - Refresher	12/4/2012	12/4/2012	Orlando
Intermediate Maintenance of Traffic	12/5/2012	12/6/2012	Orlando
Advanced Maintenance of Traffic - Refresher	12/11/2012	12/11/2012	Temple Terrace
Intermediate Maintenance of Traffic - Refresher	12/11/2012	12/11/2012	Cape Coral
Advanced Maintenance of Traffic	12/12/2012	12/14/2012	Temple Terrace
Intermediate Maintenance of Traffic	12/12/2012	12/13/2012	Cape Coral

CTT Classes

Course	Start Date	End Date	Location
Concrete Batch Plant Operator	9/6/2011	9/6/2011	Gainesville
Asphalt Plant Level 1	9/7/2011	9/9/2011	Gainesville
Written Exam Only	9/7/2011	9/7/2011	Chipley
Written Exam Only	9/7/2011	9/7/2011	Jacksonville
Written Exam Only	9/7/2011	9/7/2011	Pompano Beach
Written Exam Only	9/7/2011	9/7/2011	Tampa
Nuclear Density Gauge Safety and HazMat	9/12/2011	9/12/2011	Jacksonville
Concrete Field Inspector Specification	9/12/2011	9/14/2011	Chipley
Earthwork Construction Inspection Level 1	9/13/2011	9/14/2011	Jacksonville
Final Estimates Level 1	9/14/2011	9/14/2011	Gainesville
Earthwork Construction Inspection Level 2	9/15/2011	9/16/2011	Jacksonville
Final Estimates Level 2	9/15/2011	9/16/2011	Gainesville
Quality Control Manager	9/15/2011	9/16/2011	Chipley
Concrete Field Inspector Specification	9/19/2011	9/21/2011	Ft Myers
Quality Control Manager	9/22/2011	9/23/2011	Ft Myers
Final Estimates Level 1	9/28/2011	9/28/2011	Tampa
Final Estimates Level 2	9/29/2011	9/30/2011	Tampa
Asphalt Paving Level 1	10/4/2011	10/4/2011	Davie
Asphalt Plant Level 1	10/4/2011	10/6/2011	Miami
Asphalt Paving Level 2	10/5/2011	10/7/2011	Davie
Written Exam Only	10/5/2011	10/5/2011	Chipley
Written Exam Only	10/5/2011	10/5/2011	Jacksonville
Written Exam Only	10/5/2011	10/5/2011	Pompano Beach
Written Exam Only	10/5/2011	10/5/2011	Tampa
Asphalt Plant Level 2	10/5/2011	10/7/2011	Gainesville
Earthwork Construction Inspection Level 1	10/11/2011	10/12/2011	Tampa

CTT Classes

Course	Start Date	End Date	Location
Pile Driving Inspection	10/11/2011	10/13/2011	Gainesville
Earthwork Construction Inspection Level 2	10/13/2011	10/14/2011	Tampa
Concrete Field Inspector Specification	10/17/2011	10/19/2011	Orlando
Asphalt Mix Designer	10/18/2011	10/21/2011	Gainesville
Quality Control Manager	10/20/2011	10/21/2011	Orlando
Qualified Aggregate Sampler	10/24/2011	10/24/2011	Gainesville
Asphalt Paving Level 1	10/25/2011	10/25/2011	Chipley
Asphalt Paving Level 2	10/26/2011	10/28/2011	Chipley
Asphalt Paving Level 1	11/1/2011	11/1/2011	Deland
Asphalt Paving Level 2	11/2/2011	11/4/2011	Deland
Drilled Shaft Inspection	11/2/2011	11/4/2011	Davie
Written Exam Only	11/2/2011	11/2/2011	Chipley
Written Exam Only	11/2/2011	11/2/2011	Jacksonville
Written Exam Only	11/2/2011	11/2/2011	Pompano Beach
Written Exam Only	11/2/2011	11/2/2011	Tampa
Asphalt Paving Level 1	11/7/2011	11/7/2011	Gainesville
Asphalt Paving Level 2	11/8/2011	11/10/2011	Gainesville
Asphalt Plant Level 1	11/8/2011	11/10/2011	Gainesville
Final Estimates Level 1	11/8/2011	11/8/2011	Davie
Final Estimates Level 2	11/9/2011	11/10/2011	Davie
Final Estimates Level 1	11/14/2011	11/14/2011	Gainesville
Concrete Field Inspector Specification	11/15/2011	11/17/2011	Gainesville
Earthwork Construction Inspection Level 1	11/15/2011	11/16/2011	Gainesville

CTT Classes

Course	Start Date	End Date	Location
Final Estimates Level 2	11/15/2011	11/16/2011	Gainesville
Earthwork Construction Inspection Level 2	11/17/2011	11/18/2011	Gainesville
Pile Driving Inspection	11/30/2011	12/2/2011	Orlando
Nuclear Density Gauge Safety and HazMat	12/5/2011	12/5/2011	Gainesville
Earthwork Construction Inspection Level 1	12/6/2011	12/7/2011	Gainesville
Written Exam Only	12/7/2011	12/7/2011	Chipley
Written Exam Only	12/7/2011	12/7/2011	Jacksonville
Written Exam Only	12/7/2011	12/7/2011	Pompano Beach
Written Exam Only	12/7/2011	12/7/2011	Tampa
Earthwork Construction Inspection Level 2	12/8/2011	12/9/2011	Gainesville