

# SUMTER COUNTY PUBLIC WORKS

SUMTER COUNTY, FLORIDA

319 E. Anderson Avenue • Bushnell, FL 33513 • Phone (352) 569-6700 • Fax (352) 569-6701 • Website <http://sumtercountyfl.gov>



## Memo

To: FACERS

From: Scott B. Cottrell, PE  
NACE Florida State Director  
Director, Public Works  
Sumter County

A handwritten signature in blue ink that reads "Scott B. Cottrell".

Date: November 18, 2011

Subject: NACE Update for FACERS Board Meeting on 18 November 2011

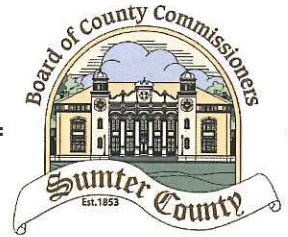
The following information is provided as a summary of NACE activity related to FACERS.

1. On 17 October, I wrote a letter to all the County Engineers of Florida Counties that are not yet members of FACERS and NACE, requesting that they consider membership. See attached
2. The Executive Directors of NACE (Brian C. Roberts) and APWA (Peter B. King) wrote joint letters to Martin Knopp, FHWA Administrator of the Florida Division, and Ananth Prasad, FDOT Secretary, regarding Every Day Counts (EDC) and participation in the State Transportation Innovation Council (STIC) (see attached). They offered their assistance in identifying local public agency personnel for membership in the STIC. If those positions are already filled, they requested to know who is participating.
3. The next annual NACE conference is 1-5 April 2012 in Lexington, KY, and registration is already open

# SUMTER COUNTY PUBLIC WORKS

SUMTER COUNTY, FLORIDA

319 E. Anderson Avenue • Bushnell, FL 33513 • Phone (352) 569-6700 • Fax (352) 569-6701 • Website <http://sumtercountyfl.gov>



October 17, 2011

«First\_Name» «Last\_Name»«Addition»  
«Position»  
«DivisionDept»  
«County\_»  
«Street\_Address» «Address\_1»  
«City\_», «State» «Zip»

Subject: NACE and FACERS

Dear «Title» «Last\_Name»:

As you manage the myriad of things that folks in our profession do, you may occasionally wonder if there is an organization that is focused on and supportive of Public Works in general and County Engineers in particular. The answer is a resounding YES.

The National Association of County Engineers (NACE) and its Florida affiliate FACERS (Florida Association of County Engineers and Road Superintendents) provide forums for discussion and problem resolution.

Not only that, they also provide access to both national and state government at the highest levels. NACE is headquartered in Washington DC, and its Executive Director is a frequent guest on the hill and before transportation related committees. FACERS is also affiliated with FAC (Florida Association of Counties) which is a pathway to Tallahassee.

Membership in FACERS also brings the ability to reach out to all the other County Engineers in the state with questions or issues and get real time responses that make sense in the context of County government. The Florida Technology Transfer Center, T2C, from the University of Florida at Gainesville is also an active participant in FACERS activities – they bring training opportunities that are second to none. We are in frequent contact with FDOT at both the District and State levels, speaking with one voice.

I've enclosed some information on both NACE and FACERS. It is best to join both at one time for a total annual cost of \$170 (or \$120 if you have never joined FACERS before – we will waive the FACERS \$50 for newcomers).

If you are already a member of NACE or FACERS or both, then my apologies for this letter and welcome aboard. I will make sure we update the membership roster. If you are not, I encourage you to join for your enhanced professionalism, and your County's enhanced access to vital information. Please call or email me directly if you have questions.

The NACE and FACERS websites are:

[www.countyengineers.org](http://www.countyengineers.org)

[www.facers.org](http://www.facers.org)

Sincerely,

Scott B. Cottrell, PE  
Director, Public Works  
Sumter County  
NACE Florida State Director  
Phone: 352-569-6702  
[Scott.cottrell@sumtercountyfl.gov](mailto:Scott.cottrell@sumtercountyfl.gov)



## FACERS AGENDA

November 16 – 18, 2011

in conjunction with

2011 FAC Legislative Conference & Educational Exposition

Sandestin Beach Resort

Walton County, FL

### Wednesday

|                     |  |
|---------------------|--|
| 8:30 am – 9:30 am   | High Friction Surfaces for Spot Improvements (Frank Julian, FHWA)        |
| 9:45 am – 11:00 am  | Topic to be determined (Richard Londono, ADAAG Consulting Services)      |
| 11:00 am – 12:00 pm | Exhibit Hall/Networking Opportunities***                                 |
| 12:00 pm – 1:30 pm  | Lunch (on your own)  |
| 1:30 pm – 1:45 pm   | Common Goals In Public Works (Kim Kirby, APWA Florida Chp. President)    |
| 1:45 pm – 2:15 pm   | Lane Departure Crashes/SHSP Update (Joe Santos, FDOT)                    |
| 2:30 pm – 2:45 pm   | NACE Update (Ramon Gavarrete, Highlands County)                          |
| 2:45 pm – 3:45 pm   | GIS Utililization for Civil Engineers Lloyd Facklam/Rob Garrigues, RS&H) |
| 4:00 pm – 5:00 pm   | Round Table Discussion – Public Works Construction Issues                |

### Thursday

|                     |  |
|---------------------|--|
| 8:00 am – 9:00 am   | Emergency Management: Planning and Organizing Emergency Support Function 3 (ESF3) (John Newton, Hillsborough County) |
| 9:15 am – 10:15 am  | Sustainability (Ron Sill, RS&H)  |
| 10:30 am – 11:30 am | Recent MUTCD and FDOT updates (Mark Wilson, FDOT)  |
| 11:30 am – 1:00 pm  | FAC Luncheon or Lunch on your own  |
| 1:00 pm – 2:00 pm   | Pavement Management-Getting the Right Contractor (Chris Evers, EJ Brenneman)   |
| 2:00 pm – 3:00 pm   | GRS Abutments: Costs Comparisons, Site Selection, Design and Construction (Bob Barrett & Mike Adams, DOT)            |
| 3:15 pm – 4:15 pm   | Legal and Legislative Updates Kathleen Neill, FDOT)  |
| 4:30 pm – 5:00 pm   | Round Table Discussion – Public Works Legal Issues   |
| 6:00 pm – 10:00 pm  | FACERS Social  |

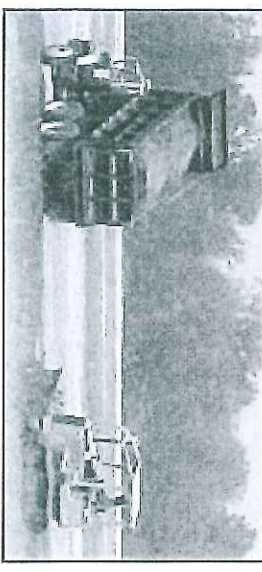
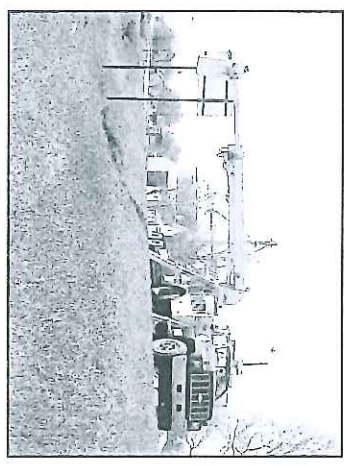
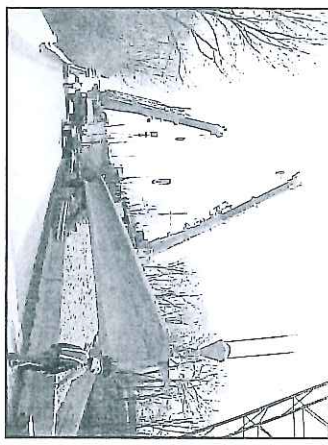
### Friday

|                    |  |
|--------------------|--|
| 8:30 am – 9:30 am  | Presentation, (Ananth Prasad, FDOT State Secretary)    |
| 9:30 am – 11:30 am | FACERS Board of Directors & General Membership Meeting |

\*\*\*NOTE: FACERS does not charge a registration fee for its activities; however attendance at any FAC events/functions requires that you are a registered FAC participant.

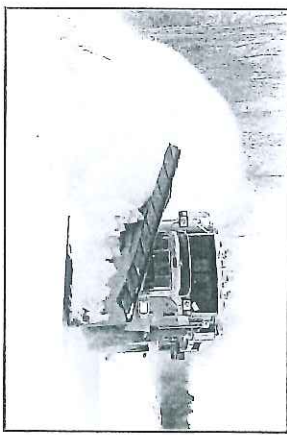
**NACE has Four Prime Objectives:**

- To advance county engineering and management by providing a forum for exchange of ideas and information aimed at improving service to the public.
- To foster and stimulate the growth of individual state organizations of county engineers and county road officials.
- To improve relations and the spirit of cooperation among county engineers and other agencies.
- To monitor national legislation affecting county transportation/public works departments and through NACo, provide NACE's legislative opinions.



**What is NACE?**

The National Association of County Engineers, NACE is a nonprofit, non-partisan professional association in its sixth decade representing county engineers and professional road managers. Our over 1,900 members consist of county engineers, highway superintendents, road masters, parish engineers, road supervisors, highway administrators, transportation directors, public works directors, road operations managers, and other titles for professional road and bridge managers.

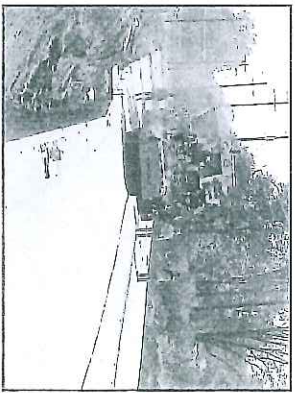


Nationwide, local roads account for about 75% of the nations highways and roads (about 2.93 million miles). Counties manage about 1.74 million miles of those roads while cities and



townships account for another 1.19 million miles. Counties also own 231,000 bridges and operate one

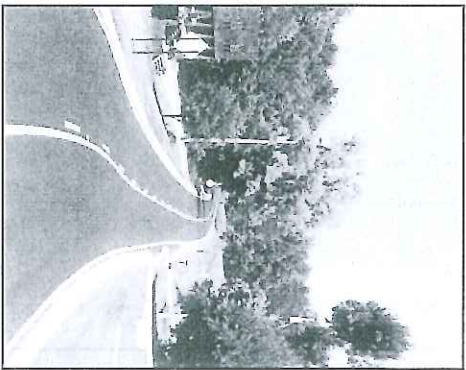
third of the nation's transit systems. This is important to remember not only because of the large mileage but also because just about all travel of people and goods starts and ends on local roads. Thus, local roads are a vital element of our nation's highway system. Local Roads Matter!



**10  
Reasons  
To Join**



**NACE**  
Representing county engineers and professional road managers.



NACE  
National Association of County Engineers  
25 Mass. Ave NW, Ste 580  
Washington, DC 20001  
Phone: (202) 393-5041  
Fax: (202) 393-2630  
E-mail: [nace@naco.org](mailto:nace@naco.org)  
[www.countyengineers.org](http://www.countyengineers.org)

**1. Advocacy:**

*Representing county engineers and professional road managers nationally.*

NACE is instrumental in getting the "county road" view into such issues as the transportation bill reauthorization and many regulatory issues such as bridge standards, wetlands, traffic control standards and permitting. The NACE "Local Roads Matter!" campaign demonstrates how safe and efficient local roads and bridges are critical to our lives. NACE works in conjunction with the National Association of Counties (NACo) legislative associates and transportation committee to influence transportation issues. NACE also participates in the Local Officials for Transportation (LOT) coalition and the Roadway Infrastructure Safety Coalition (RISC).

**3. Conferences:**

*Delivering best practices and the latest technology at national and regional meetings.*

NACE holds an annual meeting & technical and management conference and participates in the NACo annual and legislative conferences. Actively supports regional Local Road Coordinator and state affiliate meetings, which provide the perfect opportunity to acquire information to make informed decisions that save or optimize your county's resources.

**4. Technical Assistance and Training:**

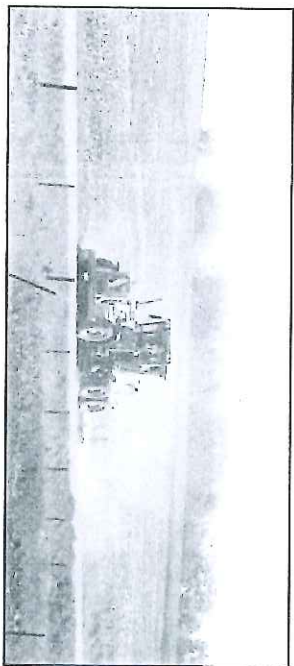
*Exploring the best way to deploy technologies and information.*

NACE works closely with the 58 Local & Tribal Technical Assistance Program (LTAP/TTAP) centers in every state to promote expanded and state-of-the-art training for county professional road managers and workers.

**2. Networking with Professional Road Managers:**

*Learning from each other, unique solutions to mutual problems.*

NACE members share a common bond. Whether you attend conferences or participate in one of the NACE committees, workshops, task forces or many other NACE activities, your interaction with other county engineers and road professionals is invaluable.



**5. NACE News and E-News:**

*Communicating vital information, ideas, and available resources.*

NACE members keep on top of the latest developments in Washington, D.C. and counties around the nation through the monthly e-newsletter, NACE News, and biweekly e-news update. Useful information on the many federal and national programs and resource links are included for your reference.

**6. NACE Website and Publications:**

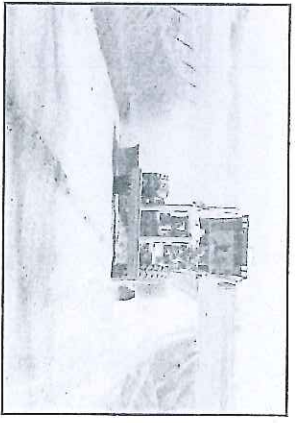
*Providing tools to optimize your resources.*

NACE provides a top-notch website at [www.countyengineers.org](http://www.countyengineers.org) with news and useful information about NACE, our 31 state affiliates and other transportation industry organizations. NACE offers a full catalog of training publications (available on CD and on the members only section of website).

**7. Research/Information:**

*Supplying specific answers to specific questions.*

NACE works for you to save your most valuable resource—your time. Research of special subject areas such as bridge standards, best practices, consultant selection, capital programming, road benchmarking, and a multitude of other subjects. The NACE list service provides an easy venue to ask your colleagues about how they "solved" issues you face.



**8. National Partnerships:**

*Working with others to promote better communication within the industry.*

NACE is actively involved in partnerships with several national organizations and agencies to provide training, education, outreach, joint conference sponsorship, forums and summits. Partnerships exist with FHWA, Forest Service, AASHTO, Army Corps Engineers, ATSSA, and the National LTAP Association.

**9. Access to National Leaders:**

*Making connections in Washington.*

NACE can connect you with key national leaders from the current Administration, the Congress and federal agencies who are accessible through meetings and conferences. NACE sets up meetings with congressional representatives or their staffs so that you get "face time" in Washington.

**10. Professionalism:**

*Promoting public responsibility in service to our citizens.*

NACE advances the professional road manager image by promoting the adherence to ethical standards in performance of public sector duties and responsibilities. NACE is nationally recognized and is frequently called upon to articulate views of our profession.



**NACE 2012**  
Lexington, Kentucky

Racing to the Future

**Don't miss this chance**  
to meet with over 350  
County Road Officials!

Do you market **road, bridge, safety or transportation** related products or services?

Then you need to be at the  
**NACE 2012 Annual Conference**  
April 1-5 in Lexington, Kentucky



October 21, 2011

Martin C. Knopp  
Division Administrator  
FHWA - Florida Division  
545 John Knox Road, Ste 200  
Tallahassee, FL 32303

**RE: Every Day Counts (EDC)**

Dear EDC Co-Chair,

The American Public Works Association (APWA) and the National Association of County Engineers (NACE) appreciate the opportunity to participate in the next phase of Every Day Counts. It is our understanding that you are finalizing the membership for the State Transportation Innovation Council (STIC) Charter and we would like to offer our assistance in identifying appropriate Local Public Agency (LPA) members.

We recognize that in many States, the STIC will include local representation from the previous State Implementation Teams. We feel it is critical to the success of the program to have a diverse and balanced cross section which includes representation of both city public works/engineers and county engineers. Please contact us, APWA Director of Government Affairs, Jim Fahey at [jfahey@apwa.net](mailto:jfahey@apwa.net), 202-218-6730, or NACE Executive Director, Brian Roberts at [broberts@naco.org](mailto:broberts@naco.org), 202-393-5041, if you need assistance in identifying participants. If your STIC currently has LPA representation, we would appreciate your assistance in letting us know who is participating. We have an extensive network ready to assist those already participating.

APWA is an international educational and professional association representing 28,500 members who plan, design, build, operate and maintain our public infrastructure, including transportation, water supply, sewage and refuse disposal systems, public buildings and other structures and facilities essential to our nation's economy and way of life. Public works professionals serve a diverse range of local communities, municipalities, counties, townships, villages and districts, whether large or small, rural or urban.

NACE has approximately 1900 members in 50 states and Canada. U.S. members are responsible for 1.74 million miles of road, 231,000 bridges, and operate 1/3 of the nation's transit systems. NACE has a fourfold objective: (1) To advance county engineering and management by providing a forum for the exchange of ideas and information, (2) To foster and stimulate the growth of individual state organizations of county engineers, and (3) To improve relations and the spirit of cooperation among county engineers and other agencies in the solution of mutual problems and (4) to monitor national legislation affecting county transportation departments and through NACo provide legislative opinions.

Thank you for your assistance. We look forward to supporting your efforts.

Sincerely,

Peter B. King  
Executive Director

Brian C. Roberts  
Executive Director

cc: EDC Coordinators  
APWA Transportation Liaisons, NACE State Directors, and LTAP Directors



October 21, 2011

Ananth Prasad  
Secretary  
Florida Dept of Transportation  
605 Suwannee Street  
Tallahassee, FL 32399-0450

**RE: Every Day Counts (EDC)**

Dear EDC Co-Chair,

The American Public Works Association (APWA) and the National Association of County Engineers (NACE) appreciate the opportunity to participate in the next phase of Every Day Counts. It is our understanding that you are finalizing the membership for the State Transportation Innovation Council (STIC) Charter and we would like to offer our assistance in identifying appropriate Local Public Agency (LPA) members.

We recognize that in many States, the STIC will include local representation from the previous State Implementation Teams. We feel it is critical to the success of the program to have a diverse and balanced cross section which includes representation of both city public works/engineers and county engineers. Please contact us, APWA Director of Government Affairs, Jim Fahey at [jfahey@apwa.net](mailto:jfahey@apwa.net), 202-218-6730, or NACE Executive Director, Brian Roberts at [broberts@naco.org](mailto:broberts@naco.org), 202-393-5041, if you need assistance in identifying participants. If your STIC currently has LPA representation, we would appreciate your assistance in letting us know who is participating. We have an extensive network ready to assist those already participating.

APWA is an international educational and professional association representing 28,500 members who plan, design, build, operate and maintain our public infrastructure, including transportation, water supply, sewage and refuse disposal systems, public buildings and other structures and facilities essential to our nation's economy and way of life. Public works professionals serve a diverse range of local communities, municipalities, counties, townships, villages and districts, whether large or small, rural or urban.

NACE has approximately 1900 members in 50 states and Canada. U.S. members are responsible for 1.74 million miles of road, 231,000 bridges, and operate 1/3 of the nation's transit systems. NACE has a fourfold objective: (1) To advance county engineering and management by providing a forum for the exchange of ideas and information, (2) To foster and stimulate the growth of individual state organizations of county engineers, and (3) To improve relations and the spirit of cooperation among county engineers and other agencies in the solution of mutual problems and (4) to monitor national legislation affecting county transportation departments and through NACo provide legislative opinions.

Thank you for your assistance. We look forward to supporting your efforts.

Sincerely,

Peter B. King  
Executive Director

Brian C. Roberts  
Executive Director

cc: EDC Coordinators  
APWA Transportation Liaisons, NACE State Directors, and LTAP Directors